



ABOUT THE PROJECT

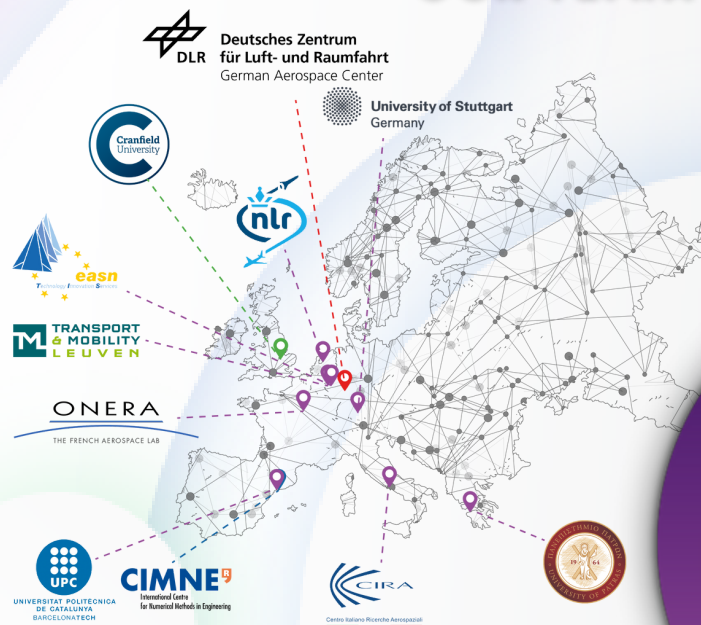
Impact Monitor is an EU-funded project implemented by a highly competent and complementary consortium.

Its first high-level aim is to develop a coherent and holistic impact assessment framework and toolbox that supports the European Commission (EC) in making science-based informed decisions for technology and policy assessment of the environmental, economic, and societal impact of European aviation R&I. Specifically, the assessments will focus on greenhouse-gas emissions, local air-quality, and noise. The project focuses on demonstrating the collaborative assessment through example use cases at aircraft, airport, and air transport system level.

The underlying system of systems architecting process will be supported by digital technologies for collaborative engineering, under the project coordination of the German Aerospace Center (DLR).

Impact Monitor builds on and advances the approaches used in EC Better Regulation guidelines and toolbox as well as in the EC projects TEAM_Play, Clean Sky TE, and AGILE/AGILE 4.0.

OUR TEAM



CONNECT WITH THE PROJECT



- 📍 101097011
- 📅 01 February 2023
- 🕒 24 Months
- 👤 DLR, Prajwal Shiva Prakasha
- ✉ info@impactmonitor.eu
- 🌐 impactmonitor.eu



IMPACT MONITOR

An open framework for collaborative impact assessment of European aviation R&I

Funded by the European Union under GA No. 101097011. Views and opinions expressed are however those of the author(s) only and not necessarily reflect those of the European Union or CINEA. Neither the European Union nor CINEA can be held responsible for them.

Design by EASN-TIS



Funded by the European Union



Coordinated by the German Aerospace Center

OBJECTIVES

Evolve an assessment framework/toolbox that provides a systematic approach of the complete cycle of performing holistic environmental, economic and societal impact assessments of European aviation R&I

Develop a scalable, open source, distributed, multidisciplinary, modular, and model independent collaborative assessment framework to support holistic impact monitoring

Demonstrate the collaborative framework robustness via multi-level use cases

Establish interfaces with, and reach out to key stakeholders in European aviation R&I

Educate students and broader community with broader access to the assessment toolbox and the collaborative assessment framework through initiating an Impact Monitor Academy

Methodology

